

MANUAL for JS500



The contents could be changed to enhance the performance without notice.



Main Body



32GB Micro SD



Front FHD Cam
and cable



Power Cable
(3 Pin Connector Type)



USB Wi-Fi
Dongle



2nd Cam HD
and cable



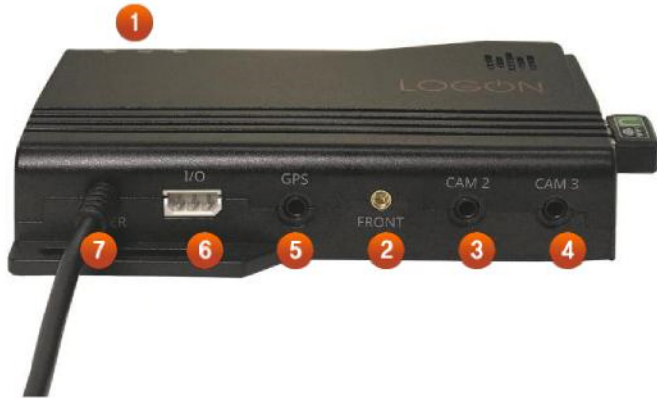
External
GPS
Receiver

Options extra cameras



PART DESCRIPTIONS

EXTERIOR



1	Status LED	LEDs showing system operating status
2	Front Cam Port	Front external camera connecting port (SMBL)
3	Cam 1	Rear external camera connecting port
4	Cam 2	Rear external camera connecting port
5	GPS	External GPS Receiver connecting port
6	I/O Port	Data Input & Output cable connecting port
7	Power	Power Jack Port
8	Wi-Fi Port	Wi-Fi Port /Connecting USB Wi-Fi Dongle here
9	Speaker Hole	Sound
10	SD Card Slot	SD Card Slot
11	Reset	Initialize the system

- **Before Install**

Note

1. Please set configuration and make sure JS500 is working correctly before installation.

2. Please check and confirm the proper spot before installation.

**3. JS500 is designed as hidden installation type on small size
It can be installed in Glove box, Bonnet, Dash Board and under Driving seat...etc.**

1. Please check and confirm the proper spot for external camera before installation.

Small size external camera also can be installed with special 3M double side from tape on various spots such as window, roof and room mirror...etc.

INSTALLATION



1 Insert Micro SD

Insert Micro SD card into the SD card slot on the main unit. Before start the system, Micro SD card must be inserted. Please be sure to insert Micro SD Card correctly as the image.

NOTE

JS500 is using format free file system to provide more secure file system and extend SD card life.

So, SD card must be formatted by JS500 exclusive PC viewer prior to use.

2 Connect Front Camera Cable

Connect Front Camera Cable into Front Camera Cable port on side of the main unit as the image.

Front Camera must be connected correctly to the main unit.

Otherwise, the system is not working.

The other side of cable should be connected to the external camera.

3 Connect Rear Camera Cable

Connect Rear Camera Cable into Rear Camera Cable port on side of the main unit as the image.

The other side of cable should be connected to the external camera.



4 Connect GPS Receiver Cable

Connect GPS Jack into GPS port as the image.
Push the camera jack and rotate it to fit and fix the jack.



5 Connect Power Cable

After above installation process, please connect Power cable to the Power Port.
When Power comes in, Status LED will lighting or blinking. (Refer to the next page for more details.)

INSTALLATION



GPS & WiFi Working Status LED

- When GPS is connected correctly and activated, Green LED will be blinking at 3 second interval.

Power LED

- When Power is connected correctly, Red LED will be ON

Recording Working Status LED

- When camera is connected and recording correctly, Green LED will be blinking at 2 second interval. (Event 1 sec interval)

6

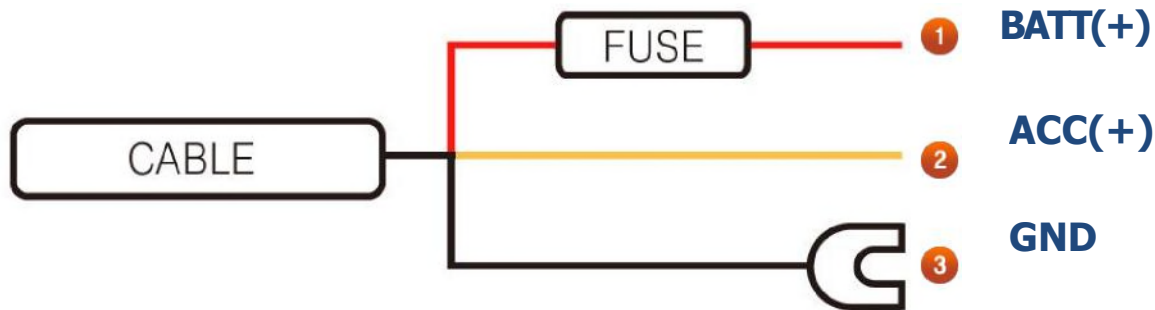


Adjust Camera Angles

6 Records video for several minutes and check the camera angles through the video view angles.

You can play the recorded video on your Smart Phone or PC Viewer.

DIRECT BATT. CONNECT



1 Red Wire BATT(+)

Connects Red wire of Power cable provided to regular Car Power in Fuse Box.

(Ex : Emergency Lights, Interior Lights, Tale Lights...etc.)

2 Yellow or White Wire ACC(+)

Connects Yellow or White Wire of Power Cable provided to the fuse that power comes in when engine is started.

(Ex : Cigar Lighter, Audio)

3 Black Wire

This is Ground. Connects it with metal parts of vehicle, such as metal bolt, screw...etc. as the image.



※ Wire color may be changed by circumstances of wire provider.

START

STATUS LED



1 Starts System

When connected to power , "Red" , "Green" & "Blue" LEDs are on while the system is booting up. (Voice : System is starting)



2

Closes System

If you stop using the system and disconnect power, it records additional 1 seconds, and three LEDs are turned On. And three LEDs goes to Off when the system is completely shut down. Note) Micro SD Card memory must be removed after LEDs are Off.



3

Recording Status LED

When "GRN" LED is Blinking at every 2 second, it indicates that recording is in progress. When the normal event occurs "GRN" LED will blink at every 1 second .



4

GPS Reception

When "BLU" LED is ON, it indicates that the GPS connected, When GPS is 3D fix, "BLU" LED blinking once at 3 second intervals

START

STATUS LED

5 LED on Each Mode



- Normal Mode
 - "RED" LED is always On.
 - "GRN" LED indicates that recording is in progress.
 - When the normal record mode , LED is blinking once at every 2 seconds.
 - When the normal event occurs, LED is blinking once at every 1 second.



- Parking Mode
 - "RED" LED is blinking once (1 second) at every 2 seconds
 - "GRN" LED is blinking once during 20 seconds, when the Parked impact or motion event occurs.



Recording Mode

Recording Mode by Power Conditions

Condition	ACC	Rec. Mode	Descriptions
Engine OFF -. ON	OFF-.ON	Normal Mode	Normal Rec. Mode starts after 20 sec of engine on
	OFF-.OFF	Parking Mode	Parking Rec. Mode starts after 20 sec of Normal Recording
Normal Rec. -. Engine OFF	ON-.OFF	Parking Mode	Parking Rec. Mode starts after 20 sec of ACC OFF
Parking Rec. -. Engine ON	OFF-.ON	Normal Mode	Normal Rec. Mode starts within 20 sec of ACC ON
Parking Mode -. Low Temp.	OFF-.OFF	Power OFF	Power shut down when battery voltage is lower than setting level.

Recording by Mode (refer Default setting)

	ACC	File Length	Recording Type	Overwriting	File Size
Normal Rec.	ON	60 Sec	Continuous Recording	O	150MB
Event Rec.	ON&OFF	20 Sec	Refer to Event Scenario	O	50MB
Parking Rec.	OFF	20 Sec	Impact, Motion	O	50MB

Recording Mode

File Name Generation

(Y: Year, M: Month, H: Hour, M: Minute, S: Second, D: Driving, P: Parking, DI : Driving , DE : Driving Event, PM: Motion Event, PE: Impact Event, PT : Time Lapse)

Driving	Normal	YYMMDD_HHMMSS_DI_1(2).MP4 / Saved in Normal Folder of SD
	Impact Event	YYMMDD_HHMMSS_DE_1(2).MP4 / Saved in Event Folder of SD
Parking	Normal	YYMMDD_HHMMSS_PI_1(2).MP4 / Saved in Normal Folder of SD
	Impact Event	YYMMDD_HHMMSS_PE_1(2).MP4 / Saved in Parking Folder of SD
	Motion	YYMMDD_HHMMSS_PM_1(2).MP4 / Saved in Parking Folder of SD
	Time Lapse	YYMMDD_HHMMSS_PT_1(2).MP4 / Saved in Parking Folder of SD

Recorded Video Spec

	Front	Rear
Resolution	FHD	FHD
Bit Rate	6/8/10Mbps	4/5/6Mbps
Angle	120	120
FPS	30/20/10	30/20/10
Video Format	H.264	
Video Type	MP4	
Audio Format	PCM	
File Format	NxFS	

LED INDICATIONS

ITEM		Blue LED	Green LED	Red LED	LED Pattern	Blink Interval	Note
Upgrade					Blinking/ Blinking/ON	0.5sec/0.5sec	2m30sec
Booting					OFF/ OFF / ON		20sec
Driving Mode	GPS Disabled				OFF/ Blinking / ON	2sec	No GPS
					ON / Blinking / ON	2sec	No 3D Fix
	GPS Activated				Blinking / Blinking / ON	3sec / 2sec	3D FIX Status
Parking Mode	Normal				Blinking/ OFF/Blinking	3sec / 2sec	Impact/Motion
	Event				Blinking/ Blinking/Blinking	3sec/2sec/1sec	
	Time Lapse				Blinking/ Blinking/Blinking	3sec/2sec/1sec	
EVENT					Blinking/Blinking/ ON	3sec/1sec	
ERROR	SD				Blinking/ON/ Blinking	3sec/3sec	
	Front Camera				Blinking/ON/2 Blinking	3sec/3sec	
	Others						

PC Viewer Guide



Configuration – Record Set



Insert Micro SD Card, and select SD card drive. Then Configuration Setting button will be activated, then click it and Configuration Setting window pops up. There are two Configuration Settings, for Black Box (DVR) and Network. In this part, Black Box Setting is explained.

SETTINGS

RECORD | NETWORK

RECORDING

QUALITY: DRIVING HIGH, PARKED HIGH

FPS: DRIVING 30FPS, PARKED 30FPS

VIDEO RESOLUTION: HIGH

PARKED MODE

RECORDING: ON OFF

RECORDING TYPE: MOTION+IMPACT

MOTION SENSITIVITY: HIGH

POWER CUT OFF: VOLTAGE 11.9(23.9), TIME 24H

TIME LAPSE RECORDING: ON OFF

SENSOR SENSITIVITY

IMPACT: DRIVING HIGHEST, PARKED HIGHEST

SD FORMAT

SD PROPORTION: SETTING 2

VOLUME

VOLUME: SPEAKER HIGHEST, MIC. MEDIUM

TIME

TIME ZONE: (UTC+09:00) Seoul

SUMMER TIME: ON OFF

PIP

PIP: DIVISION MAIN+1SUB, FULL SCREEN CAM1

ADAS

LDWS: ON OFF

STOP GO: ON OFF

INFORMATION

VOICE GUIDE: ON OFF

NETWORK FUNCTION: ON OFF

LANGUAGE: ENGLISH

FIRMWARE VERSION: 0.001

MODEL: JS-500

MANUFACTURER: LOGON co., Ltd

Buttons: Format, Initialize, Save, Close

- 1 **Video Quality / FPS (Video Frame Per Second for - CAM)**
 Driving Default : High / Parking Default : Low
 - FPS Default : Driving 30FPS / Parking 15FPS
- 2 **Parking Mode Setting**
 You can set Parking Rec. triggering type and Power Cut Off option during Parking Mode.
- 3 **G Sensor Sensitivity**
 You can select 3D G-Sensor level among, Low, Middle, High on each mode, Driving and Parking, Server Report (Emergency Report Sensing Level)
 - Default Sensing value is Middle, high, Low.
- 4 **SD Card Option**
 You can set SD Card partition rate, SD Auto Format option.

SD Partition Rate Option

	Setting 1	Setting 2	Setting 3
Normal	28%	38%	48%
Event	50%	40%	30%
Parking	20%	20%	20%

Configuration – Record Set



SETTINGS

RECORD | NETWORK

RECORDING			VOLUME		
QUALITY	DRIVING	HIGH	VOLUME	SPEAKER	HIGHEST
	PARKED	HIGH		MIC.	MEDIUM
FPS	DRIVING	30FPS	TIME		
	PARKED	30FPS	TIME ZONE	(UTC+09:00) Seoul	
VIDEO RESOLUTION	HIGH		SUMMER TIME	<input type="radio"/> ON <input checked="" type="radio"/> OFF	
PARKED MODE			PIP		
RECORDING	<input checked="" type="radio"/> ON <input type="radio"/> OFF		PIP	DIVISION	MAIN+1SUB
RECORDING TYPE	MOTION+IMPACT			FULL SCREEN	CAM1
MOTION SENSITIVITY	HIGH		ADAS		
POWER CUT OFF	VOLTAGE	11.9(23.9)	LDWS	<input type="radio"/> ON <input checked="" type="radio"/> OFF	
	TIME	24H	STOP GO	<input type="radio"/> ON <input checked="" type="radio"/> OFF	
TIME LAPSE RECORDING	<input type="radio"/> ON <input checked="" type="radio"/> OFF		INFORMATION		
SENSOR SENSITIVITY			VOICE GUIDE	<input type="radio"/> ON <input checked="" type="radio"/> OFF	
IMPACT	DRIVING	HIGHEST	NETWORK FUNCTION	<input type="radio"/> ON <input checked="" type="radio"/> OFF	
	PARKED	HIGHEST	LANGUAGE	ENGLISH	
SD FORMAT			FIRMWARE VERSION	0.001	
SD PROPORTION	SETTING 2		MODEL	JS-500	
			MANUFACTURER	LOGON co., Ltd	

8 Format

Initialize Save Close

5 Volume Control

You can set Mic. Volume recorded with video on it. The level is 5 steps, and the default is Middle.

6 Time

You can set Time Zone

7 Information

You can set Speed, Video Out, Firmware update, Language option. And also check system information

To use Network with connecting Wi-Fi Router, please select Network Function "On". Then Network Setting will be activated.

8 FORMAT

JS500 is using NxFs file format for Format Free and SD card using FAT must be formatted with this format button prior to use.

Just Click this format button.

When completes the configuration setting, click "Save" button to save into Micro SD Card. And insert the SD card to JS500 device and the values will be reflected when the device starts booting.

To initialize all the values to the default, click "Initialize" button.

14 App Download & Connect Wi-Fi

- Access “Google Play”(Access “App Store” for iOS)
- Search “JSDVR” and install it.
- Run App and connect Wi-Fi as below images.
(Default Password is “12345678”)



Run JSDVR

Confirm Wi-Fi connection

Connect JS500-xxxxxx on Wi-Fi list

Access Main Menu

15 Live View



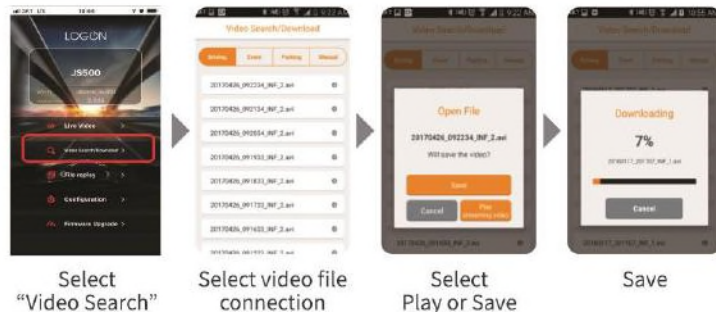
Select “live view”



Switch Front and Rear Cam View

Front & Rear Cam Live View (Rear is IR Cam Video)

16 Video File Search and Play & Save



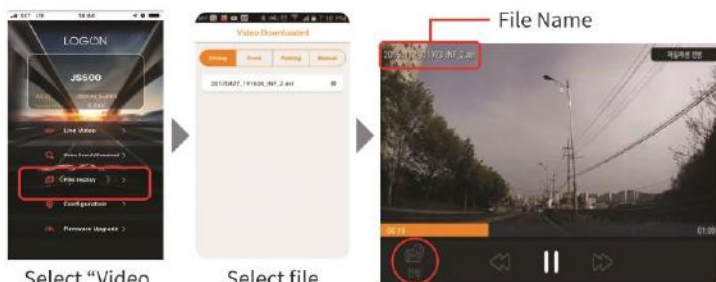
Select "Video Search"

Select video file connection

Select Play or Save

Save

17 Play Video Downloaded



Select "Video Downloaded"

Select file

File Name

Switch Front and Rear Cam Video

18 Configuration



Category	Items	Setting
1.Video	Rec. Quality	Low, Middle, High
	Driving Mode	0~3
2.Sensing Level	Parking Mode	0~3
	F-Cam Motion	0~3
	R-Cam Motion	0~3
	Time Lapse	On/Off
3.Audio	Volume(Speaker)	Low, Middle, High
	Audio Rec.	On/Off
	Voice Guide	On/Off
4.Date & Time	Black Box Date Setting	
	Time Zone Setting	-12 ~ +14
5. Parking Mode	Voltage Cut Level	(11.7/23.7), (11.9/23.9), (12.1/24.1), (12.3/24.3)
	Voltage Cut Time	Continue, Power Off after 6/12/24/48 Hours
	Parking Mode	On/Off
6.Network Setting	Change Wi-Fi Password	
7.ADAS	LDWS	On/Off
	Stop & Go	On/Off
8.System	SD Card Format	
	SD Card Partition	Preferred Driving / Parking / Event
	Initialize	
	Language	Korean,English,Chinese



Self Diagnose

Self-Diagnosis

NOTE

(Please read when sets Network)



Self Diagnosis

● Video has not been recorded.

Please check Micro SD, and also check if SD card has been formatted to NxFs format (Format Free) prior to use. Micro SD Card has a life cycle. If you use it too long, it may be working incorrectly. Please format it regularly.

● Voice is not recorded.

Please check Black Box Setting if it has been set on Mute. If the device is installed in the place blocked such as Glove box, Bonnet or below interior, the voice volume recorded may be lower. If connects with external Microphone through I/O port, the recorded voice would be louder.

● Power is not supplied.

Please put the power cable out, and connect it again. If it is still not available, please contact our local dealer or A/S center.

● Cant not copy files on Micro SD Card.

Please format SD card and try again. If it is still not working after format, contact your local dealer or A/S center.

● Video brightness is too dark

Video brightness may be too dark if installs the camera under tint. Please install again without tint or control the brightness to High on Viewer Player when you play the video file.

● GOOGLE is not available.

JS500 is using external GPS receiver through cable. Please check if the cable is connected correctly with the main device.

And also please check if the GPS receiver is placed under Tinted window. Tinting will interfere GPS reception. Please place GPS receiver on the correct place again.

● Camera is not available.

JS500 is using external Front FHD camera through Coaxial cable with MMCX Con and Rear FHD camera through cable with 2.5Ø stereo Plug.

Please check if the cable is connected corrected, and also check if there is any obstacles on camera direction.

● Recorded Video is vibrating.

Please check if the camera is firmly fixed. If not, please make it fixed with double side form tape or screw.

● Recorded Video is not clear.

Please check if there is any dust or foreign obstacle on camera lens and window.

Then, please clean them and record again.